



Honeycomb Earrings

By Maggie T Designs ©2017



Honeycomb Earrings

©2017 Maggie T Designs

Red Lava Colorway

Create a pair of earrings using honeycomb beads

Supplies

- $\frac{1}{2}$ gr 11° TOHO demi rounds (11)
- 8 - Honeycomb beads (2 hole) (HC)
- 16 - Super duo beads color A (sdA)
- 16 - Super duo beads color B (sdB)
- 4 - 4mm Swarovski bicones
- 2 - 6mm Swarovski bicones
- 2 Ear wires
- 2 - 2" Headpins
- 2 - 2" Eyepins
- 5 ft - Slon Fire 8lb (thread)
- #10 beading needle

Equipment

- Scissors
- Thread burner
- Chain nose pliers
- Round nose pliers
- Side cutter

Honeycomb Earrings ©2017 Maggie T Designs www.maggietsdesigns.com It is understood that anyone who purchases this pattern is authorized to make a single copy for his/her own use, but may not duplicate these instructions for any other purpose. Further, the original purchaser is not allowed to teach this specific design to individuals or as a class without prior written permission from the designer.



Honeycomb Earrings

By Maggie T Designs ©2017



Honeycomb Earrings

©2017 Maggie T Designs

Royal Purple Colorway

Create a pair of earrings using honeycomb beads

Supplies

- $\frac{1}{2}$ gr 11° TOHO demi rounds (11)
- 8 - Honeycomb beads (2 hole) (HC)
- 16 - Super duo beads color A (sdA)
- 16 - Super duo beads color B (sdB)
- 4 - 4mm Swarovski bicones
- 2 - 6mm Swarovski bicones
- 2 Ear wires
- 2 - 2" Headpins
- 2 - 2" Eyepins
- 5 ft - Slon Fire 8lb (thread)
- #10 beading needle

Equipment

- Scissors
- Thread burner
- Chain nose pliers
- Round nose pliers
- Side cutter

Honeycomb Earrings ©2017 Maggie T Designs www.maggietsdesigns.com It is understood that anyone who purchases this pattern is authorized to make a single copy for his/her own use, but may not duplicate these instructions for any other purpose. Further, the original purchaser is not allowed to teach this specific design to individuals or as a class without prior written permission from the designer.



Honeycomb Earrings

By Maggie T Designs ©2017



Honeycomb Earrings

©2017 Maggie T Designs

Majestic Blue Colorway

Create a pair of earrings using honeycomb beads

Supplies

- $\frac{1}{2}$ gr 11° TOHO demi rounds (11)
- 8 - Honeycomb beads (2 hole) (HC)
- 16 - Super duo beads color A (sdA)
- 16 - Super duo beads color B (sdB)
- 4 - 4mm Swarovski bicones
- 2 - 6mm Swarovski bicones
- 2 Ear wires
- 2 - 2" Headpins
- 2 - 2" Eyepins
- 5 ft - Slon Fire 8lb (thread)
- #10 beading needle

Equipment

- Scissors
- Thread burner
- Chain nose pliers
- Round nose pliers
- Side cutter

Honeycomb Earrings ©2017 Maggie T Designs www.maggietdesigns.com It is understood that anyone who purchases this pattern is authorized to make a single copy for his/her own use, but may not duplicate these instructions for any other purpose. Further, the original purchaser is not allowed to teach this specific design to individuals or as a class without prior written permission from the designer.

HINT: Be careful stringing the HCs if the color is double-sided

HINT: Wipe off thread with paper towel before use to remove black residue

Step 1: On a waxed wingspan of thread pick up 1-11, 1-sdA, 1-11 and 1-HC. Repeat this sequence 3 more times for a total of 4 HC, 4 sdA & 8-11 ending with 1 HC.

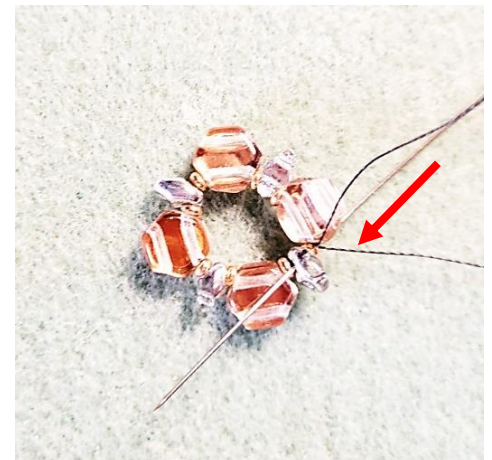
Be sure both holes are open on all your super duos and honeycomb beads.



Tie the thread in a circle with a double knot leaving a 3-4" tail.

Pass your thread through the closest 11 and the lower hole of the sdA.

Burn off the tail thread.



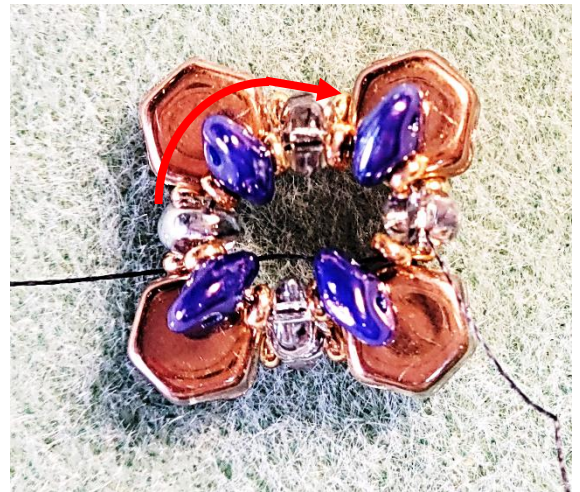
Now pass the thread through the open hole of this same sdA to step up for your next row. This will reverse your direction.



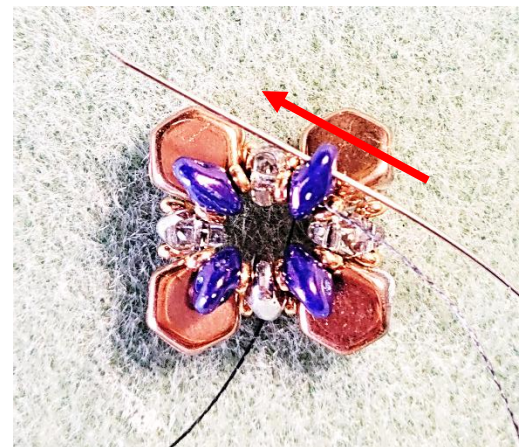
Step 2: Pick up 1-11, 1 sdB and 1-11. Pass the thread through the open hole of the next sdA. Repeat this sequence 3 more times.



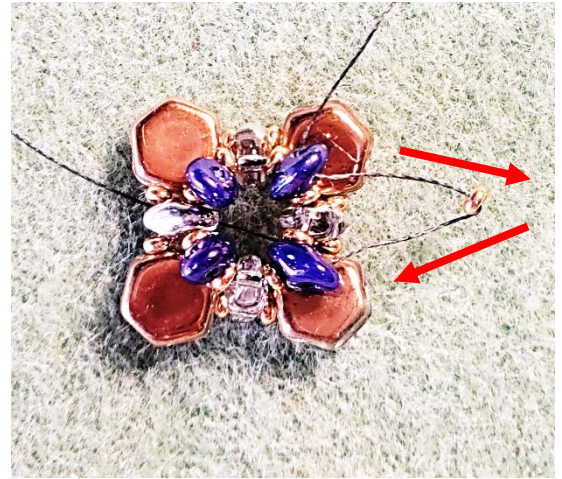
Pull the thread tightly to form into a circle. Repeat this thread path for strength.



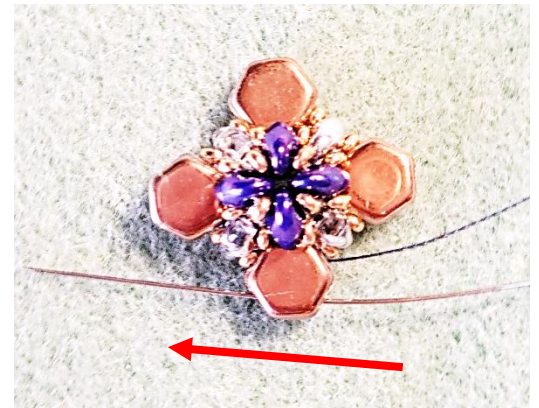
Pass your thread through the open hole of the nearest sdB to step up for your next row. This will again reverse your direction.



Step 3: Pick up 1-11 and pass the thread through the open hole of the next sdB. Repeat 3 more times, pulling the thread taut so the circle is closed up tightly. Repeat this thread path for strength.



Step 4: Work your thread down through the beadwork until it's exiting one used hole of 1-HC. Now pass your thread through the open hole of this same HC, reversing your direction.



Step 5: Pick up 1-11, 1-sdA and 1-11. Pass your thread through the open hole of the next HC. Repeat 3 more times. Pull the thread taut and repeat this thread path for strength.

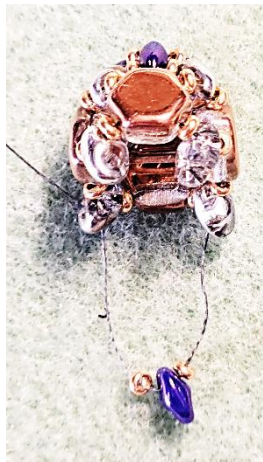
This step will tighten up your sphere structure. End by exiting one of the used sdA holes.



Pass the thread through the open hole of this same sdA to step up to the next row, again reversing your direction.



Step 6: Repeat step 2.



Step 7: Repeat step 3.

Step 8: Work your thread back through the bead and tie 2-3 half hitch knots between the beads. Burn or cut off the thread.

Step 9: Take 1 eyepin and pass it through one 4mm bicone, then through the center bottom hole and top hole of your sphere.

Pull the eyepin upwards so the eyepin ring and bicone are seated firmly at the bottom of your sphere.

Step 10: Place the 2nd 4mm bicone onto the eyepin and form a wrapped loop at the top of your sphere. Hang this loop from one of your ear wires.



Step 11: Place one 6mm bicone onto 1 headpin and form a wrapped loop. Hang this from the eyepin loop of your earring. Now attach the ear wire to the top wrapped loop.



Repeat steps 1-11 to make your second earring.

Enjoy your new earrings!

Designer's Note: Make a single beaded bead and hang it from a chain or ribbon for a matching pendant necklace!

Colorways

Royal Purple

HC - Apollo Gold

sdA - Labrador

sdB - Nebula Royal Blue

11 - TOHO #PF551 Rose Gold

Bicones - Crystal Rose Gold

Slon Fire - Black

Findings - AC



Red Lava

HC - Cystal AB

sdA - Pale Gold

sdB - Matte Metallic Lava

11 - TOHO #PF557 Galv Gold

Bicones - Crystal Aurum

Slon Fire - Crystal

Findings - GP



Majestic Blue

HC - Iris Blue

sdA - Labrador

sdB - Crown Blue

11 - TOHO #205 Gold Amethyst

4mm Bicones - Fuchsia AB2X

6mm Bicones - Majestic Blue AB

Slon Fire - Crystal

Findings - SP

